

## Countersunk Washers

Steel

### SPECIFICATION

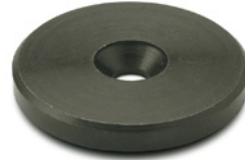
Steel

- Turned
- Blackened
- Zinc plated, blue passivated **ZB**

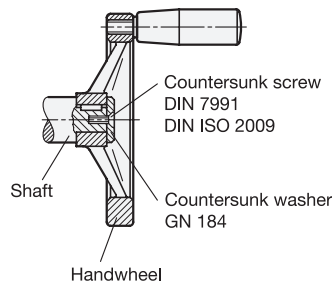
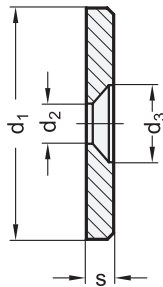
### INFORMATION

Countersunk washers GN 184 are retained to the face of the shaft end with a countersunk head screw DIN ISO 2009 or DIN 7991 forming a clean-look end cap.

A typical application is the retention of handwheels with hub keyed to the shaft.



Application example:  
Mounting  
of a handwheel  
with keyway  
on a shaft



### GN 184

| Description  | d1 | d2  | d3   | s   | For countersunk screws |              |
|--------------|----|-----|------|-----|------------------------|--------------|
|              |    |     |      |     | DIN 7991               | DIN ISO 2009 |
| GN 184-12    | 12 | 3.2 | 6.5  | 2.5 | M 3                    | 2            |
| GN 184-16    | 16 | 4.3 | 8.5  | 3   | M 4                    | 4            |
| GN 184-20    | 20 | 4.3 | 8.5  | 3   | M 4                    | 6            |
| GN 184-22    | 22 | 5.3 | 10.3 | 3.5 | M 5                    | 8            |
| GN 184-25    | 25 | 5.3 | 10.3 | 3.5 | M 5                    | 12           |
| GN 184-28    | 28 | 5.3 | 10.3 | 3.5 | M 5                    | 15           |
| GN 184-32    | 32 | 6.4 | 12.3 | 4   | M 6                    | 22           |
| GN 184-36    | 36 | 6.4 | 12.3 | 4   | M 6                    | 29           |
| GN 184-40    | 40 | 6.4 | 12.3 | 5   | M 6                    | 45           |
| GN 184-45    | 45 | 6.4 | 12.3 | 6   | M 6                    | 71           |
| GN 184-52    | 52 | 6.4 | 12.3 | 6   | M 6                    | 94           |
| GN 184-12-ZB | 12 | 3.2 | 6.5  | 2.5 | M 3                    | 2            |
| GN 184-16-ZB | 16 | 4.3 | 8.5  | 3   | M 4                    | 4            |
| GN 184-20-ZB | 20 | 4.3 | 8.5  | 3   | M 4                    | 6            |
| GN 184-22-ZB | 22 | 5.3 | 10.3 | 3.5 | M 5                    | 8            |
| GN 184-25-ZB | 25 | 5.3 | 10.3 | 3.5 | M 5                    | 12           |
| GN 184-28-ZB | 28 | 5.3 | 10.3 | 3.5 | M 5                    | 15           |
| GN 184-32-ZB | 32 | 6.4 | 12.3 | 4   | M 6                    | 22           |
| GN 184-36-ZB | 36 | 6.4 | 12.3 | 4   | M 6                    | 29           |
| GN 184-40-ZB | 40 | 6.4 | 12.3 | 5   | M 6                    | 45           |
| GN 184-45-ZB | 45 | 6.4 | 12.3 | 6   | M 6                    | 71           |
| GN 184-52-ZB | 52 | 6.4 | 12.3 | 6   | M 6                    | 94           |